

# PIR LUTUFLAI LAKHA

## General Information: Name:

Pir Lakho Lutuf-ullah Town: Jhirk .

District: Thatta Taluka: Jhrik, Location:

Thatta to Hyderabad National High way

Road, within Hills.

Heritage Category: Grave Yard

## Coverage Area:

According to topography survey is 43

acres

## Typical Period of Architecture Style:

From 13 th Century, up to date

Global Position Coordinates: 2500.926

N, 6811.765 E

## Ownership/Management:

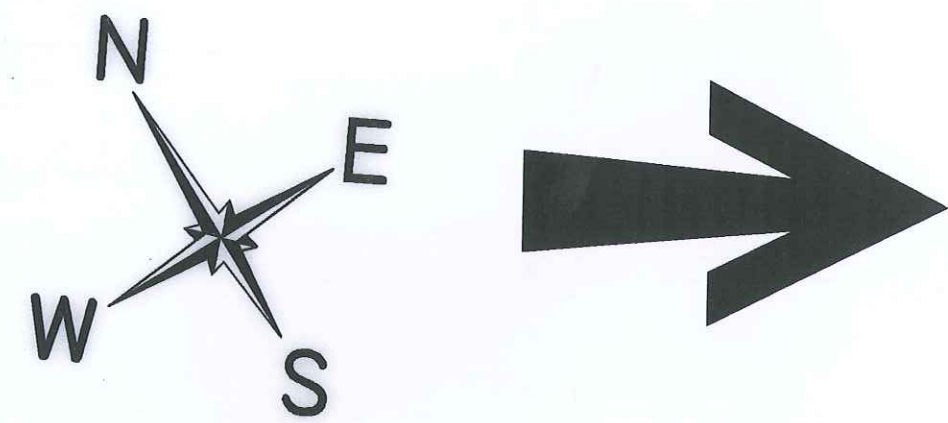
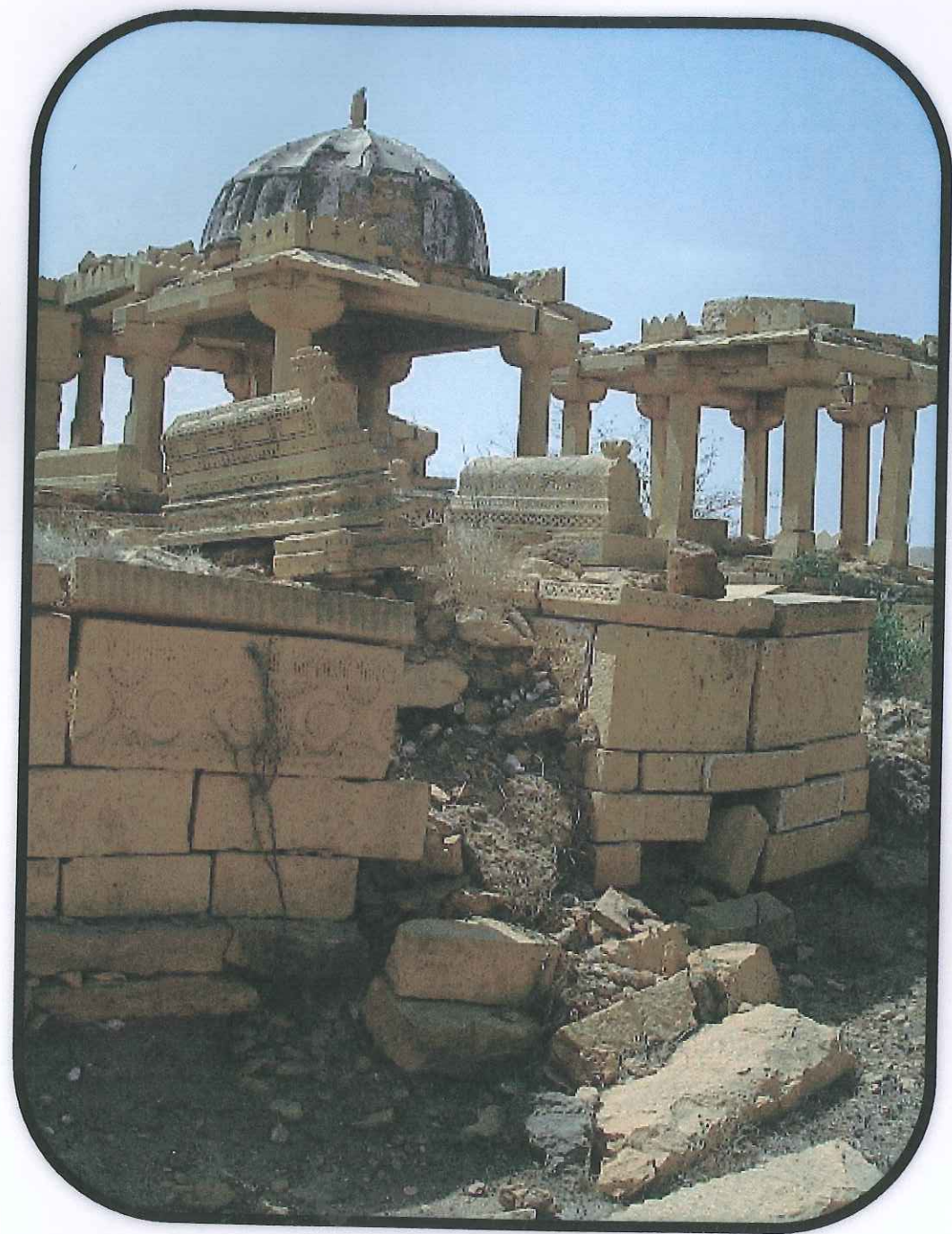
Supervision and the management by  
Department of Antiquities Govt: of Sindh



## Department of Antiquity



5/22

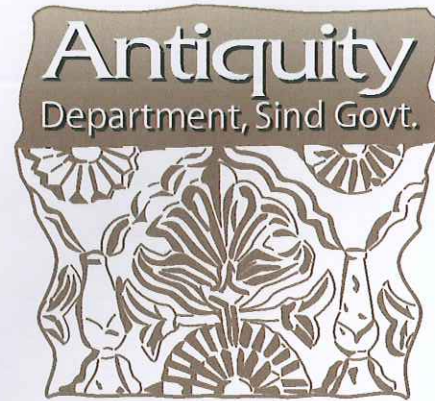


Department of  
Antiquity

**PIR LUTUFLAI  
LAKHA**



Medium



# PIR LUTUFLAI LAKHO

## Time When Build



Pir Lakho Lutuf-ullah Town: Jhirk .  
District: Thatta Taluka: Jhrik,  
Location: Thatta to Hyderabad  
National High way Road, within  
Hills.

Heritage Category: Grave Yard  
Coverage Area: According to  
topography survey is 43 acres  
Typical Period of Architecture  
Style: From 13 th Century, up to  
date Global Position Coordinates:  
2500.926 N, 6811.765 E

## Time When Devasted



Pir Lakho Lutuf-ullah Town: Jhirk .  
District: Thatta Taluka: Jhrik,  
Location: Thatta to Hyderabad  
National High way Road, within  
Hills.

Heritage Category: Grave Yard  
Coverage Area: According to  
topography survey is 43 acres  
Typical Period of Architecture  
Style: From 13 th Century, up to  
date Global Position Coordinates:  
2500.926 N, 6811.765 E

## After Conservation



Pir Lakho Lutuf-ullah Town: Jhirk .  
District: Thatta Taluka: Jhrik,  
Location: Thatta to Hyderabad  
National High way Road, within  
Hills.

Heritage Category: Grave Yard  
Coverage Area: According to  
topography survey is 43 acres  
Typical Period of Architecture  
Style: From 13 th Century, up to  
date Global Position Coordinates:  
2500.926 N, 6811.765 E

**Ownership/Management:** Supervised & Managed by Department of Antiquities Govt of Sindh



# PIR LUTUFLAI LAKHA

**General Information: Name:**

Pir Lakho Lutuf-ullah Town: Jhirk .  
District: Thatta Taluka: Jhrik, Location:  
Thatta to Hyderabad National High way  
Road, within Hills.

**Heritage Category:** Grave Yard

**Coverage Area:**  
According to topography survey is 43  
acres

**Typical Period of Architecture Style:**

From 13 th Century, up to date  
Global Position Coordinates: 2500.926  
N, 6811.765 E

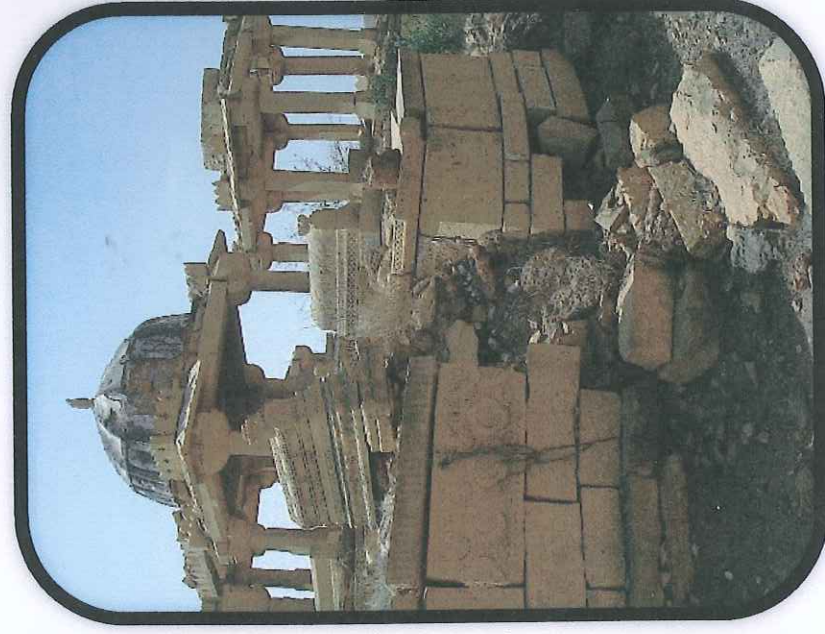
**Ownership/Management:**

Supervision and the management by  
Department of Antiquities Govt. of Sindh

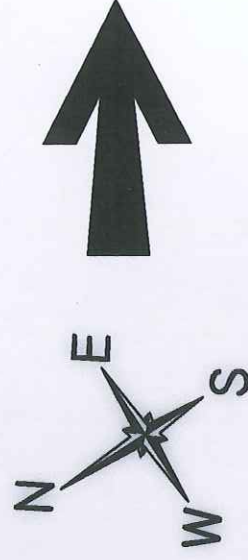
Department of  
Antiquity



Govt of Sindh



# PIR LUTUFLAI LAKHA

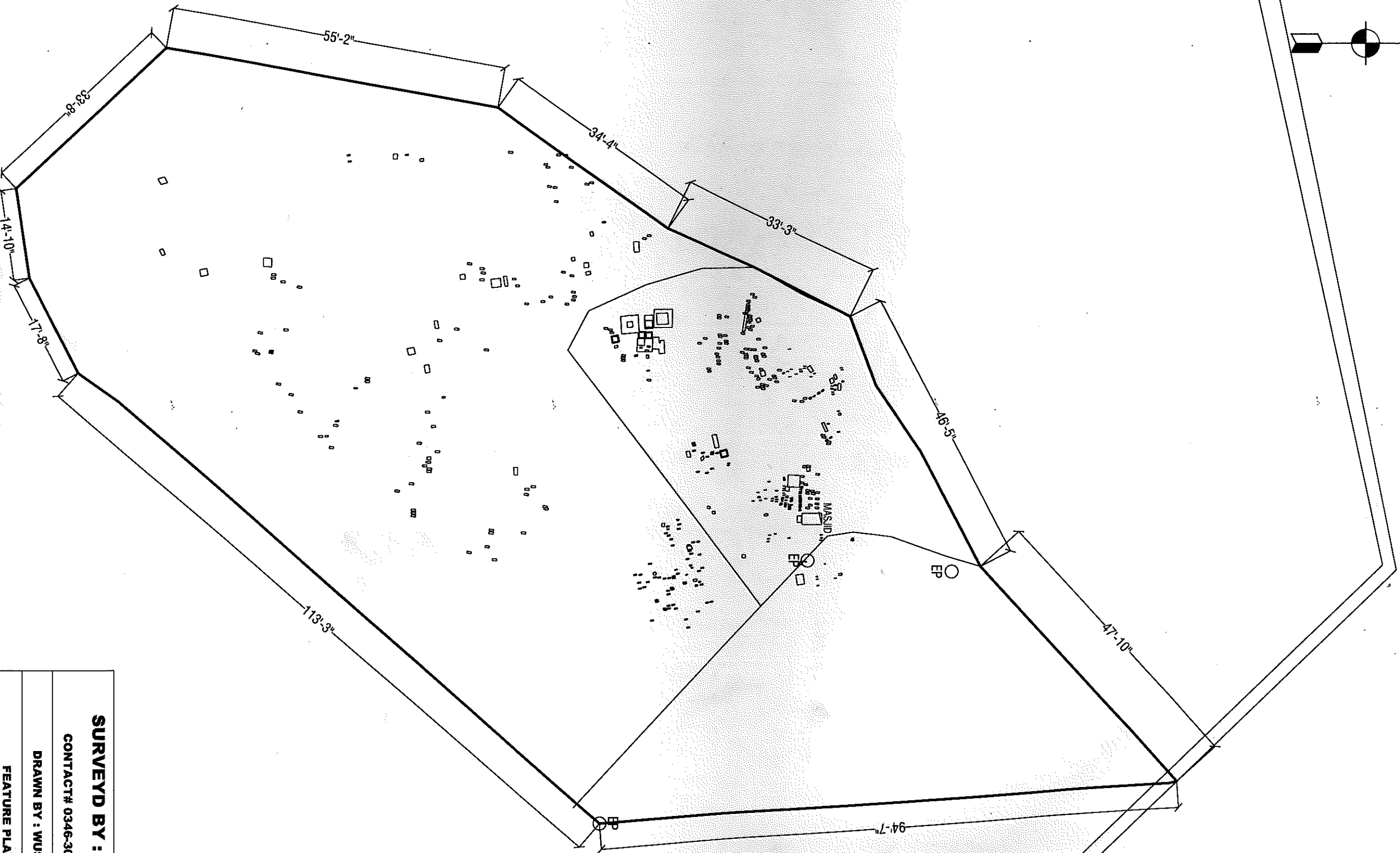
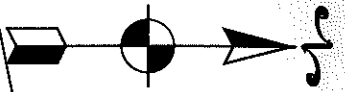


Department of  
Antiquity



Govt of Sindh

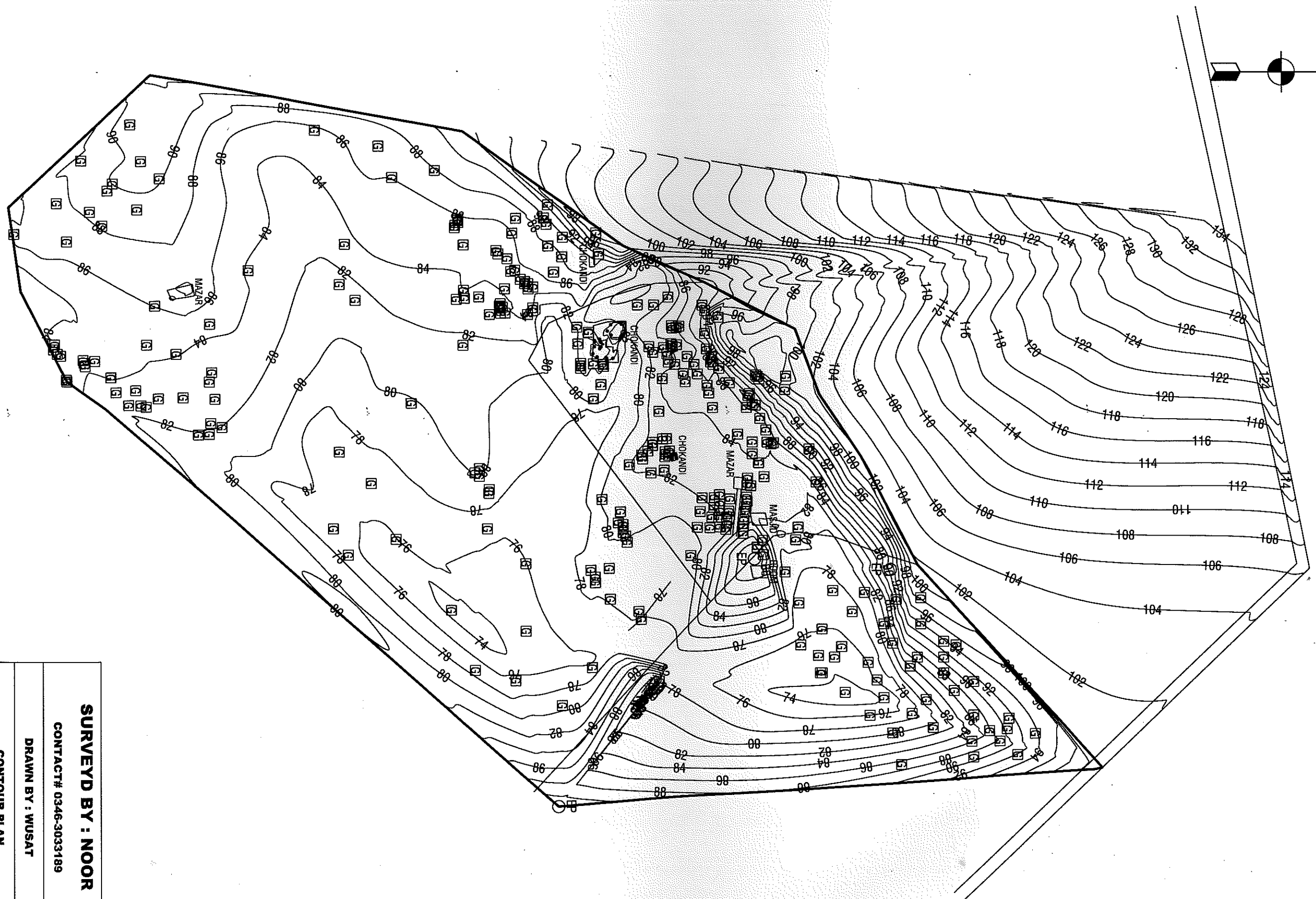
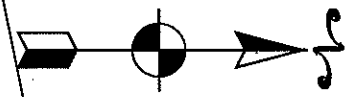
# FEATURE PLAN OF GRAVEYARD AT LAKHO PIR



**TOTAL AREA = 43 ACRES**

<b>SURVEYD BY : NOOR</b>	
CONTACT# 0346-3033189	
DRAWN BY : WUSAT	
FEATURE PLAN	
SCALE: 1" = 100'-0"	
CONTOUR INTERVAL 2H	JANUARY 2008

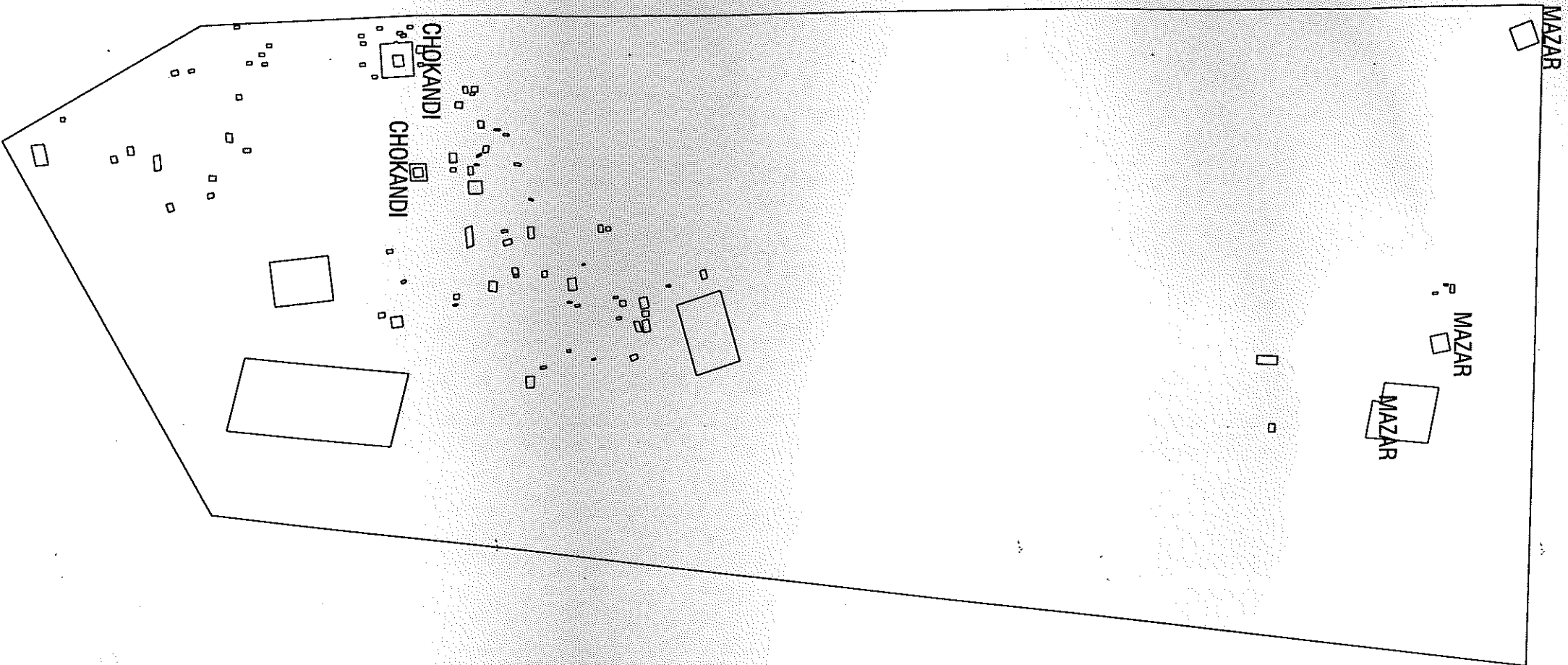
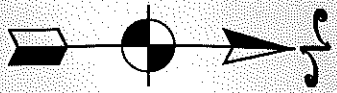
# CONTOUR PLAN OF GRAVEYARD AT LAKHO PIR



**TOTAL AREA = 43 ACRES**

<b>SURVEYD BY : NOOR</b>	
CONTACT# 0346-3033189	
DRAWN BY : WUSAT	
CONTOUR PLAN	
SCALE: 1" = 100'-0"	
CONTOUR INTERVAL 2ft	JANUARY 2008

# FEATURE PLAN OF GRAVEYARD AT DATAAR



**TOTAL AREA = 25 ACRES**

**SURVEYD BY : NOOR**

CONTACT# 0346-3033189

DRAWN BY : WUSAT

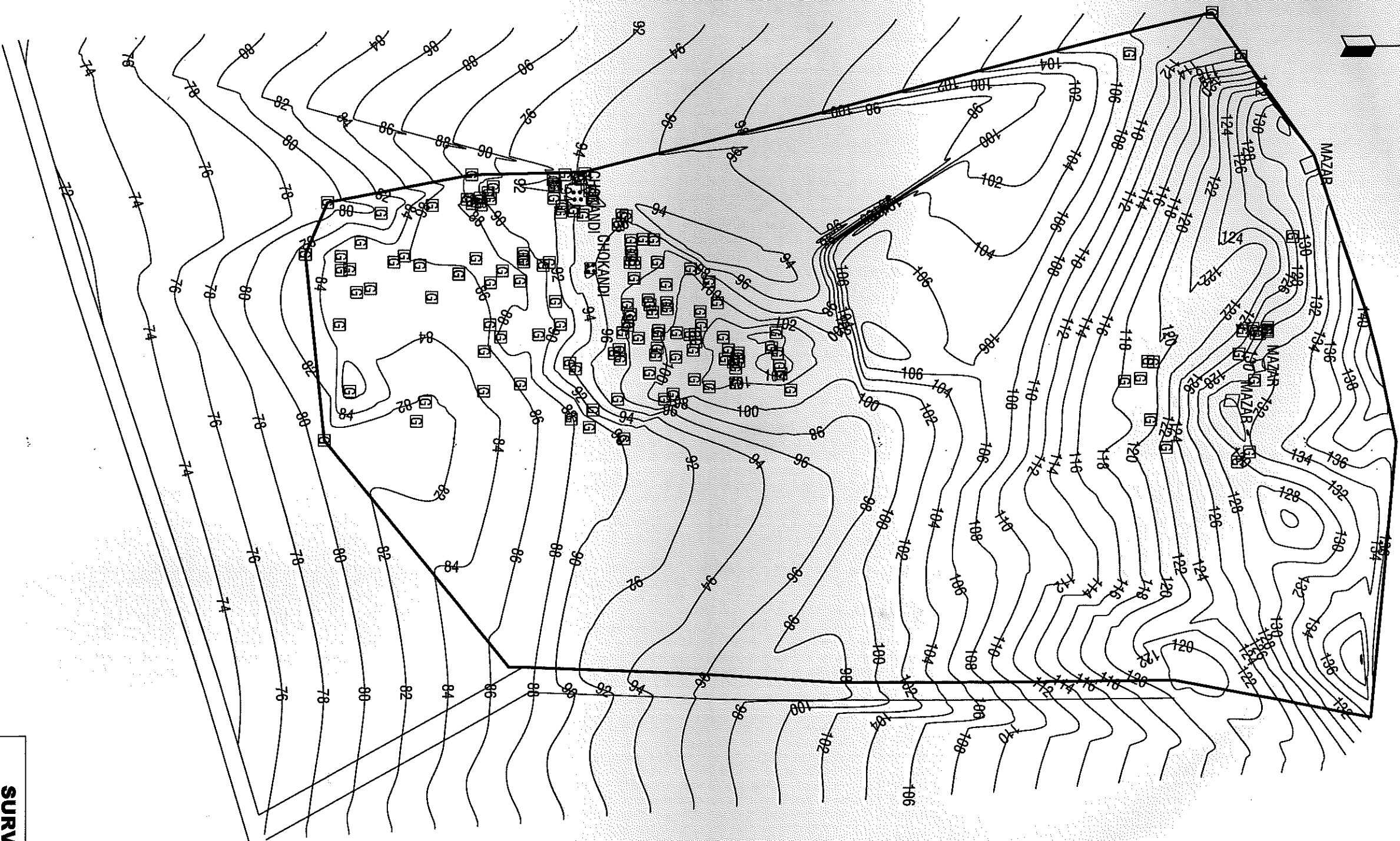
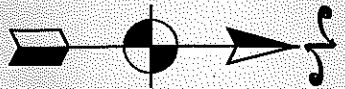
FEATURE PLAN

SCALE: 1" = 80'-0"

CONTOUR INTERVAL 2ft

JANUARY 2008

# CONTOUR PLAN OF GRAVEYARD AT DATAAR

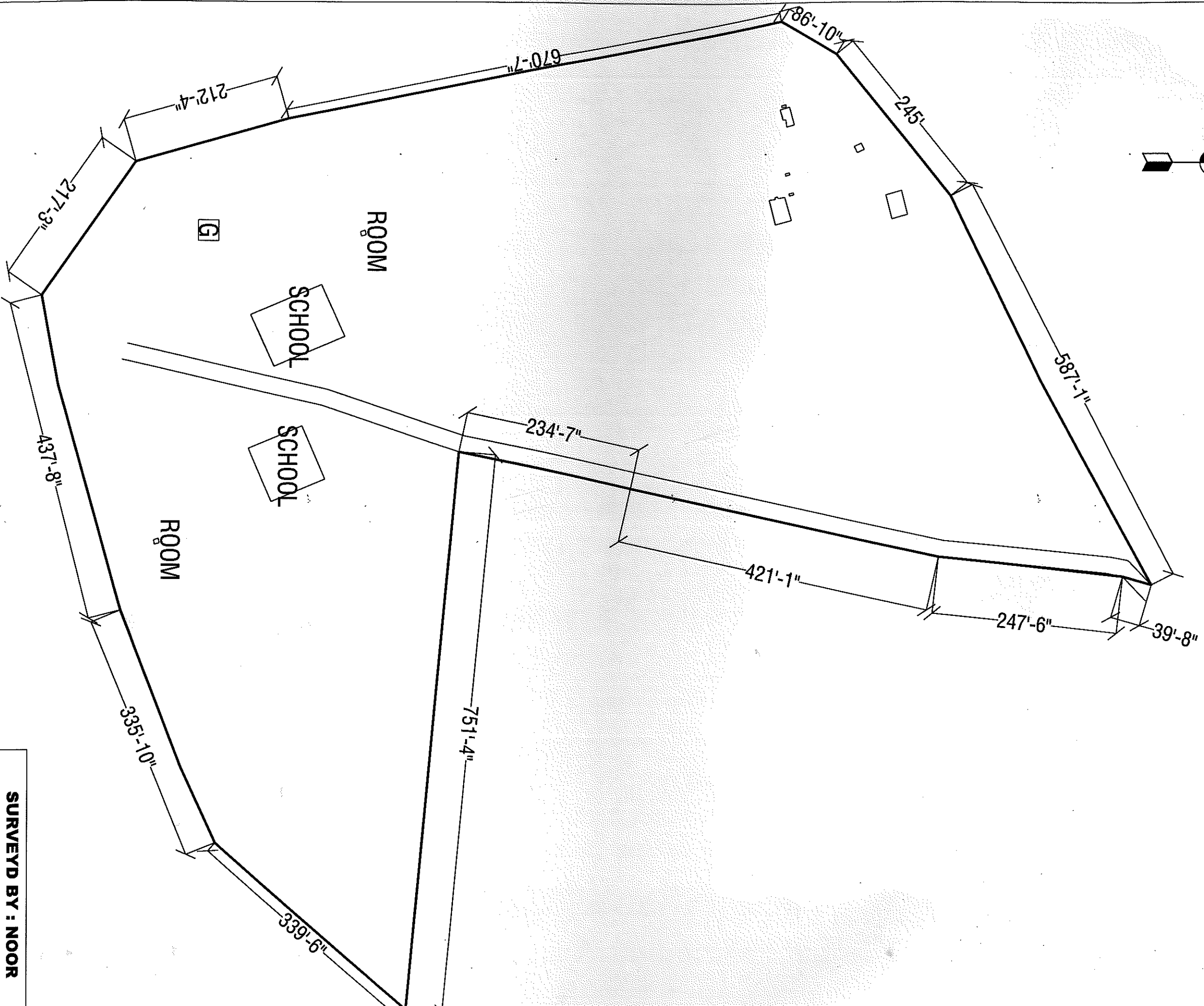
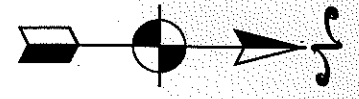


**TOTAL AREA = 41 ACRES**

<b>SURVEYD BY : NOOR</b>	
CONTACT# 0346-3033189	
DRAWN BY : WUSAT	
<b>CONTOUR PLAN</b>	
SCALE: 1" = 100'-0"	
CONTOUR INTERVAL 2ft	JANUARY 2008



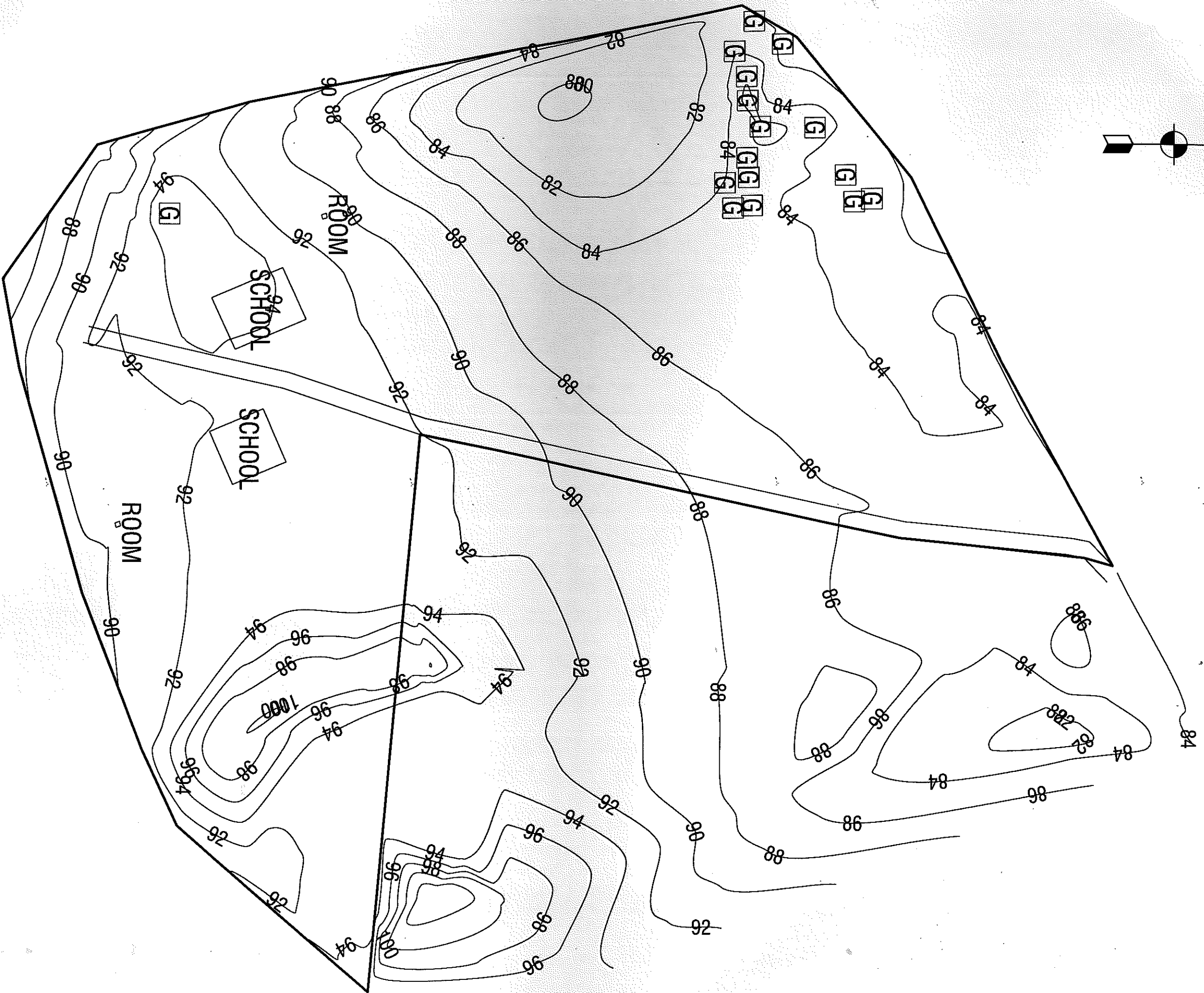
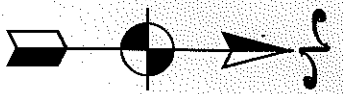
# FEATURE PLAN OF GRAVEYARD AT GUJJO



**TOTAL AREA = 21 ACRES**

<b>SURVEYD BY : NOOR</b>	
CONTACT# 0346-3033189	
DRAWN BY : WUSAT	
FEATURE PLAN	
SCALE: 1" = 65'-0"	
CONTOUR INTERVAL 2'	JANUARY 2008

# CONTOUR PLAN OF GRAVEYARD AT THATTA



**TOTAL AREA = 21 ACRES**

<b>SURVEYD BY : NOOR</b>	
CONTACT# 0346-3033189	
DRAWN BY : WUSAT	
<b>CONTOUR PLAN</b>	
SCALE: 1" = 55'-0"	
CONTOUR INTERVAL 2ft	JANUARY 2008